



Government Gazette Staatskoerant

REPUBLIC OF SOUTH AFRICA
REPUBLIEK VAN SUID-AFRIKA

Vol. 593

Pretoria, 4 November 2014

No. 38172

N.B. The Government Printing Works will not be held responsible for the quality of "Hard Copies" or "Electronic Files" submitted for publication purposes



AIDS HELPLINE: 0800-0123-22 Prevention is the cure

IMPORTANT NOTICE

The Government Printing Works will not be held responsible for faxed documents not received due to errors on the fax machine or faxes received which are unclear or incomplete. Please be advised that an "OK" slip, received from a fax machine, will not be accepted as proof that documents were received by the GPW for printing. If documents are faxed to the GPW it will be the sender's responsibility to phone and confirm that the documents were received in good order.

Furthermore the Government Printing Works will also not be held responsible for cancellations and amendments which have not been done on original documents received from clients.

CONTENTS • INHOUD

<i>No.</i>		<i>Page No.</i>	<i>Gazette No.</i>
GENERAL NOTICES			
Environmental Affairs, Department of			
<i>General Notices</i>			
948	National Environmental Management: Protected Areas Act (57/2003): Draft notice declaring the Dwesa-Cwebe Marine Protected Area in terms of section 22A	3	38172
949	do.: Draft regulations for the Dwesa-Cwebe Marine Protected Area	7	38172

GENERAL NOTICES

NOTICE 948 OF 2014

DEPARTMENT OF ENVIRONMENTAL AFFAIRS

NATIONAL ENVIRONMENTAL MANAGEMENT PROTECTED AREAS ACT, 2003 (ACT NO. 57 OF 2003)

DRAFT NOTICE DECLARING THE DWESA CWEBE MARINE PROTECTED AREA IN TERMS OF SECTION 22A OF THE NATIONAL ENVIRONMENTAL MANAGEMENT PROTECTED AREAS ACT, 2003 (ACT NO. 57 OF 2003)

I, Bomo Edith Edna Molewa, Minister of Environmental Affairs, hereby publish for public comment, the intention to withdraw the existing Dwesa-Cwebe Marine Protected Area under Section 22B and to declare, under Section 22A of the National Environmental Management Protected Areas Act, 2003 (Act No. 57 of 2003), the Dwesa-Cwebe Marine Protected Area as set out in the Schedule hereto.

Any person who wishes to submit representations or comments in connection with the proposed declaration is invited to do so within 30 days from the date of publication in the *Government Gazette* and by no later than 16:00 on the last day. Comments received after this time may not be considered.

Hand deliver to: The Deputy Director-General
Branch: Oceans and Coasts
Department of Environmental Affairs
Attention: Xola Mkefe
East Pier Building 2, East Pier Road
V and A Waterfront, Cape Town

By post to: The Deputy Director-General
Branch: Oceans and Coasts
Department of Environmental Affairs
Attention: Xola Mkefe
PO Box 52126
V and A Waterfront, Cape Town, 8002

By email to: Xmkefe@environment.gov.za

Enquiries: Xola Mkefe 021 819 2420



BOMO EDITH EDNA MOLEWA
MINISTER OF ENVIRONMENTAL AFFAIRS

SCHEDULE

All geographic co-ordinates are determined in accordance with the *WGS 84* datum, and all bearings are true bearings.

Declaration of the marine protected area

Boundaries of the marine protected area

The Dwesa Cwebe Marine Protected Area in the Eastern Cape is bounded by, the sea area (including all estuaries as far as its tidal influence as indicated by the 5 meter contour line) between the high water mark, and a distance of twelve nautical miles seaward, and between, as a south-western boundary, a line drawn 135° from Human's Rock (point A6), and, as a north-eastern boundary, a line drawn 135° from the Ntlongonyane River mouth (point A1). The south-eastern offshore boundary is a straight line running 045°, which joins the southern corner (point B2) and the eastern corner (point B1) of the area. The map and reference points are contained in Annexure 1 hereto.

Purpose

The purpose of declaring this Marine Protected Area is:

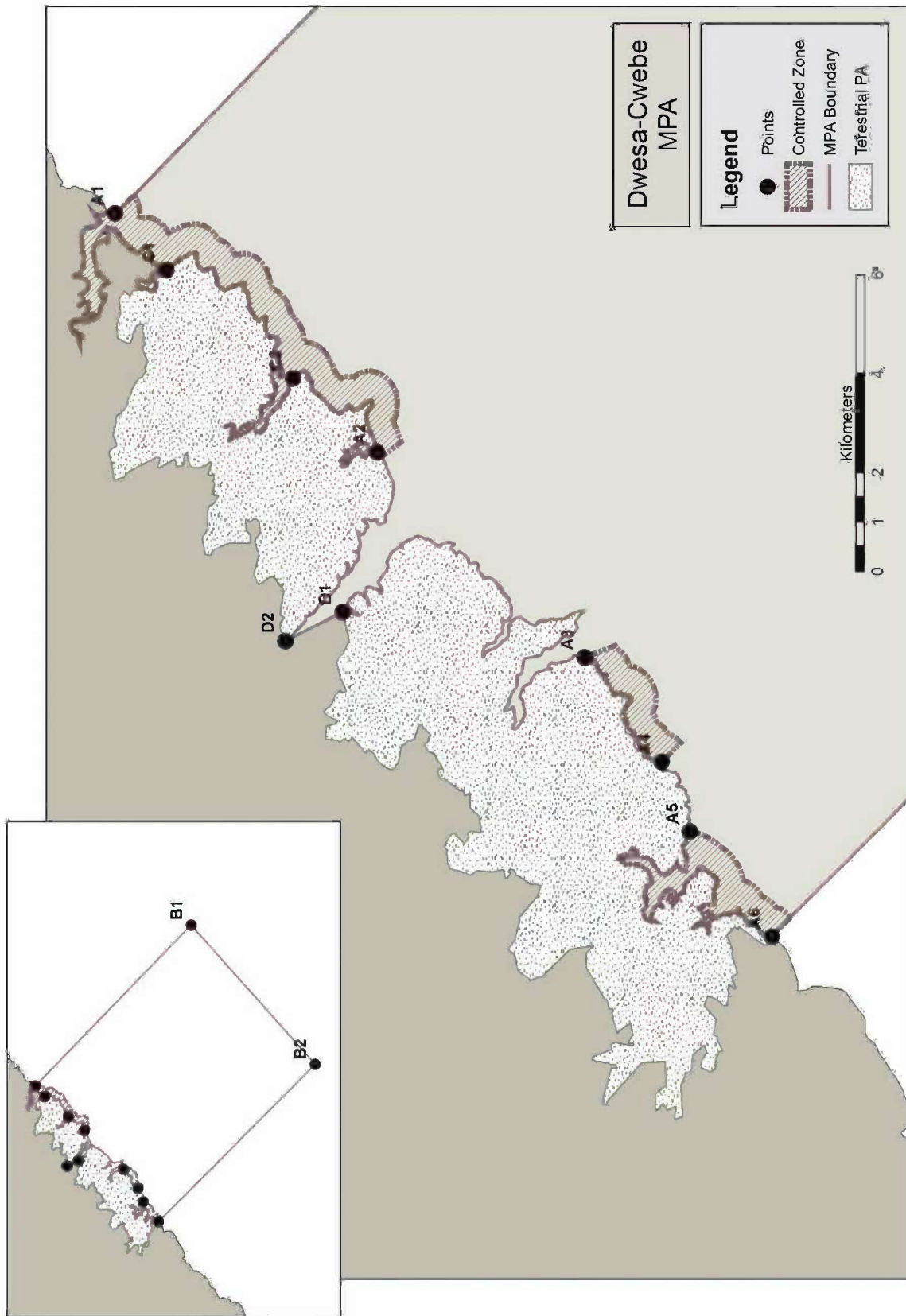
- (a) to contribute to a national and global representative system of marine protected areas, by providing protection for species, habitats and ecosystem processes in a biodiversity hotspot;
- (b) to facilitate fisheries management by protecting spawning stock, allowing stock recovery, enhancing stock abundance in adjacent areas, in particular linefish and abalone stocks ;
- (c) protect the nursery function of the Mbashe estuary and the recruitment of estuarine-dependent fish into marine fisheries;
- (d) for the protection of fauna and flora or a particular species of fauna or flora and the physical features on which they depend; and
- (e) control other activities in the Marine Protected Area to reduce the risks of habitat degradation.

Withdrawal and repeal of existing marine protected area

The declaration of the Dwesa-Cwebe marine protected area as contained in stipulation 2(7) of the declaration notice named Declaration of Areas as Marine Protected Areas in *Government Gazette* 219487, Notice No. 1429 of 29 December 2000, is hereby withdrawn and repealed.

Annexure 1

Code	Point X	Point Y
B2	28.978085	-32.467491
A6	28.825813	-32.315574
A5	28.844888	-32.300685
A3	28.878202	-32.280496
A4	28.857563	-32.295541
A2	28.913837	-32.243745
A1	28.957258	-32.196071
B1	29.112835	-32.347179
D1	28.890255	-32.237468
D2	28.861283	-32.228217
C1	28.947000	-32.205000
C2	28.927000	-32.228000



NOTICE 949 OF 2014**DEPARTMENT OF ENVIRONMENTAL AFFAIRS****NATIONAL ENVIRONMENTAL MANAGEMENT PROTECTED AREAS ACT, 2003
(ACT NO. 57 OF 2003)****DRAFT REGULATIONS FOR THE DWESA-CWEBE MARINE PROTECTED AREA**

I, Bomo Edith Edna Molewa, Minister of Environmental Affairs, hereby publishes for public comment, the draft Dwesa-Cwebbe Marine Protected Area regulations published in terms of sections 48A(2) and 86(1)(a), (b), (c) and (d) of the National Environmental Management Protected Areas Act, 2003 (Act No. 57 of 2003), as set out in the Schedule hereto.

Any person who wishes to submit representations or comments in connection with the draft regulations are invited to do so within 30 days from the date of publication in the *Government Gazette* and by no later than 16h00 on that day.

Hand deliver to: The Deputy Director-General
Branch: Oceans and Coasts
Department of Environmental Affairs
Attention: Xola Mkefe
East Pier Building 2, East Pier Road
V and A Waterfront, Cape Town

By post to: The Deputy Director-General
Branch: Oceans and Coasts
Department of Environmental Affairs
Attention: Xola Mkefe
PO Box 52126
V and A Waterfront, Cape Town, 8002

By email to: Xmkefe@environment.gov.za

Enquiries: Xola Mkefe at 021 8192420



BOMO EDITH EDNA MOLEWA

MINISTER OF ENVIRONMENTAL AFFAIRS

SCHEDULE

1. Definitions

- (1) In these regulations any word or expression to which a meaning has been assigned in the Act bears that meaning and, unless the context otherwise indicates-

"abalone" means any species of the genus *Haliotis*;

"Act" means the National Environmental Management Protected Areas Act, 2003 (Act No. 57 of 2003);

"alpha flag" means the "diver down" flag used to indicate that diving operations are in progress and other vessels must keep clear;

"catch and release fishing" means the capturing and immediate release of a fish alive in the same area where it was caught without causing injury;

"Controlled Zone" means an area within a Marine Protected Area where fishing or any other activity in terms of section 48A(1) of the Act may take place if authorised in terms of these regulations as contemplated in terms of section 48A(2);

"demarcation buoy" means a buoy installed to mark the boundaries of the Marine Protected Area and its zones;

"designated fish monitor" means a person appointed by the organ of state responsible for managing the Marine Protected Area;

"estuary" has the meaning assigned to it in section 1 of the National Environmental Management: Integrated Coastal Management Act, 2008 (Act No. 24 of 2008);

"fish" means any aquatic plant or animal whether piscine or not, and any mollusc, crustacean, coral, sponge, holothurian or other echinoderm, reptile and includes their eggs, larvae and all juvenile stages, but does not include sea birds, seals or any marine mammal;

"fishing" means—

- (a) searching for, catching, taking or harvesting fish or an attempt to any such activity;
- (b) engaging in any other activity which can reasonably be expected to result in the locating, catching, taking or harvesting of fish;
- (c) placing, searching for or recovering any fish aggregating device or associated gear, including radio beacons;
- (d) any operation in support or in preparation of any activity described in this definition; or
- (e) the use of an aircraft in relation to any activity described in this definition;

"hovercraft" means a craft that floats on a cushion of air and is capable of traversing water or land,

“Marine Protected Area” means the Dwesa-Cwebe Marine Protected Area as declared by the Minister in terms of section 22A of the Act;

“personal watercraft” means a power driven vessel that has a fully or partially enclosed hull and that is designed to be operated by a person standing, crouching or kneeling on it or sitting astride it;

“recreational fishing” means, fishing done for leisure or sport and not for sale, barter, earnings or gain and for the purposes of these regulations means only catch and release fishing;

“Restricted Zone” means an area within the Marine Protected Area where no fishing may take place, but where any other activity in terms of section 48A(1) of the Act may take place if authorised in terms of these regulations as contemplated in terms of section 48A(2);

“SCUBA Diving” means swimming below the surface of the water with the aid of compressed or pumped air or other gasses;

“small scale fishing” has the meaning ascribed to it in the Small Scale Fishing Policy published in *Government Gazette* 35455 GN 474 of 20 June 2012 and small scale fisher shall have the same meaning;

“spearfishing” means fishing with the use of a speargun;

“vessel” includes any canoe, lighter, floating platform, decked boat, hovercraft, personal watercraft, carrier vessel, vessel equipped with an inboard or outboard motor or any other craft, whether a surface craft or submarine; and

“WGS 84” means the World Geodetic System of 1984 (G730), which is a geographic co-ordinate system used for the co-ordinates in these regulations.

2. Restricted and controlled zones within the marine protected area

- (1) There are three Restricted Zones and three Controlled Zones within the Dwesa-Cwebe Marine Protected Area determined using WGS 84 as detailed in Annexure 1 as follows:
 - (a) The Northern Restricted Zone consists of the area which stretches from but not including the Mpenzu estuary (point A2) to and including the Mendu estuary (point A3) extending seaward to 500 meters from the high water mark. This area includes the tidal portion of the Mbashe River upstream as far as a line drawn from the point where the northwestern boundary of the Dwesa Forest Reserve reaches the high-water mark of the river (point D1), to the point where the south-western boundary of the Cwebe Forest Reserve reaches the high-water mark of the river (point D2).
 - (b) The Southern Restricted Zone consists of the area which stretches from the northern border of the Dwesa cliffs (point A4) to the southern border of the Dwesa cliffs (point A5) extending seaward to 500 meters from the high water mark.
 - (c) The offshore Restricted Zone starts from 500 meters from the high-water mark and extends up to 12 nautical miles offshore with the offshore boundary determined by a straight line from point B1 to point B2.
 - (d) The northern Controlled Zone extends from the tidal influence of the Nttonyane estuary (point A1) to the tidal influence of the Mpenzu estuary (point A2) and in a straight line out to 500 meters seaward from the high water mark.

- (e) The Central Controlled Zone extends from the tidal influence of the Mendu estuary (point A3) to the northern border of the Dwesa Cliffs (point A4) in a straight line out to 500 meters seaward from the high water mark. .
- (f) The Southern Controlled Zone extends from the southern border of the Dwesa Cliffs (point A5) to the coastal southern boundary of the Marine Protected Area (point A6) in a straight line out to 500 meters seaward from the high water mark.
- (g) The tidal portion of all estuaries excluding the Mendu estuary and the lower reaches of the Mbashe estuary form part of the Controlled Zone.

3. Control of activities in restricted zone

- (1) No person may fish, or attempt to fish, in a Restricted Zone within the Marine Protected Area.

4. Control of activities in Controlled Zone

- (1) No person may fish or attempt to fish in a Controlled Zone of the Marine Protected Area unless they are in possession of a recreational or small scale fishing permit or authorisation issued by the Minister responsible for Fisheries.
- (2) Spearfishing is prohibited.
- (3) No person may fish or attempt to fish from a vessel in a Controlled Zone

5. Small scale fishing in Controlled Zone

- (1) Any small scale fisher authorised in terms of regulation 4(1) may only engage in fishing from the shore in a Controlled Zone.
- (2) A small scale fisher authorised in terms of regulation 4(1) may only fish for the fish species, the quantity, size of fish and using the method as specified in these regulations and in Annexure 2 to these regulations.
- (3) A maximum of 39 small scale fishers in total per day may fish across all the Controlled Zones as a whole and only during the day between 07h00 and 16h00.
- (4) All linefish excluding fish from the family *Mugillidae* (Harder/Mullet) and *Pomadasys olivaceum* (Piggy) may only be caught with a rod and reel. No other method or gear may be used.
- (5) A cast net, which is a circular net weighted at the circumference for the purpose of casting, not exceeding 6 meters in diameter, may be used to collect fish from the family *Mugillidae* (Harder/Mullet) and *Pomadasys olivaceum* (Piggy) within a Controlled Zone.
- (6) A cumulative daily bag limit of ten linefish per day shall apply to those species listed as having a bag limit of ten or less in Part A of Table 1 of Annexure 2.
- (7) A small scale fisher may fish for any invertebrate species in a Controlled Zone as detailed in Table 2 of Annexure 2, except for abalone.

- (8) A small scale fisher may only fish for sand prawns, mud prawns, mud crabs and fish from the family *Mugillidae* and *Pomadasys olivaceum*, in any estuary inside a Controlled Zone. Fishing for any other fish species is prohibited in an estuary.

6. Monitoring and reporting of catch

- (1) A list of the names of the 39 small scale fishers contemplated in regulation 5(3) and who are authorised to fish on a particular day, must be provided by 12h00 on the previous day to the organ of state responsible for managing the Marine Protected Area.
- (2) Each small scale fisher must declare their total daily catch to a designated fish monitor.

7. Recreational fishing in controlled zone

- (1) Any person in possession of a recreational fishing permit may only fish in a Controlled Zone in the following areas:
 - (a) From the shore within the southern Controlled Zone;
 - (b) Within the northern Controlled Zone, from point A2 to the western bank of the mouth of the Mbayana Estuary; and
 - (c) Within the northern Controlled Zone, from the mouth of the Suku Estuary (Point C1) to Point A1 (on the north-eastern inshore boundary of the Marine Protected Area).
- (2) Any person in possession of a recreational fishing permit may only engage in catch and release fishing from the shore in the areas specified in sub-regulation (1) above.
- (3) A maximum of 12 persons per day in total may engage in recreational fishing in the areas specified in sub-regulation (1) above, with a maximum of 6 persons per area per day.
- (4) A recreational fisher may not fish for or attempt to fish for or collect bait organisms within the Marine Protected Area.
- (5) Any person undertaking recreational fishing must by 16h00 on the previous day, provide their name and any other requested details to the organ of state responsible for managing the Marine Protected Area.
- (6) Recreational fishing may only take place between 07h00 and 16h00 each day and only for a maximum of four hours per day.
- (7) The Minister may authorise one recreational catch and release fishing competition per calendar year in the areas specified in sub-regulation (1), which authorisation may be issued subject to conditions and may authorise a maximum number of recreational fishers, which exceeds the maximum number specified in sub-regulation (3).

8. SCUBA diving

- (1) No person may –
 - (a) SCUBA dive or attempt to SCUBA dive in the Marine Protected Area; or

- (b) operate or attempt to operate a SCUBA diving business in the Marine Protected Area; without a permit.
- (2) Individual SCUBA diving permits may be obtained from an office authorised by the Minister, or a SCUBA diving business operator, subject to the payment of a fee if prescribed.
 - (3) Application for a permit referred to in sub-regulation (1)(b) must be made to the Minister.
 - (4) SCUBA diving is only permitted from the shore to 500 meters seaward from the high water mark within the southern Controlled Zone and within the portion of the northern Controlled Zone from point A2 to the western bank of the mouth of the Mbayana Estuary (Point C2) and may only take place between 08h00 and 16h00.
 - (5) No SCUBA diving may take place from a vessel.
 - (6) Any person SCUBA diving in the Marine Protected Area shall prior to and at the end of each dive, report to the organ of state responsible for managing the Marine Protected Area.

9. Restriction of activities

No person may undertake any activity in the Marine Protected Area, listed in section 48A(1) of the Act, unless specifically authorised in terms of these regulations.

10. Use of vessels

- (1) Fishing gear on board a vessel that enters or traverses the Marine Protected Area must be stowed, with all hooks disconnected and un-baited; and such vessel may not stop or move at less than 5 knots at any time while in the Marine Protected Area.
- (2) A vessel entering or traversing the Marine Protected Area with fishing gear on board must have a Global Positioning System (GPS) Mapping Device with an active trail operational on the vessel, prior to entering and while traversing the Marine Protected Area and such GPS data may not be deleted from this device for forty eight hours after passing through the Marine Protected Area.
- (3) A vessel required by law to have a Vessel Monitoring System; must when entering or traversing the Marine Protected Area with fishing gear on board, ensure that the Vessel Monitoring System is active.
- (4) No person may use or attempt to use any type of personal watercraft or hovercraft within the Marine Protected Area.

11. Offences and penalties

- (1) In addition to any offence contained in section 89 of the Act, any person who contravenes or fails to comply with—
 - (a) a provision of these regulations;
 - (b) a condition mentioned in a permit issued in terms of these regulations; or

(c) a prohibition, instruction, rule or order imposed, given or issued under these regulations;

is guilty of an offence and liable in the case of a first conviction to a fine not exceeding R5 million or to imprisonment for a period not exceeding five years and in the case of a second or subsequent conviction to a fine not exceeding R10 million or imprisonment for a period not exceeding 10 years or in both instances to both a fine and such imprisonment.

12. Withdrawal and repeal

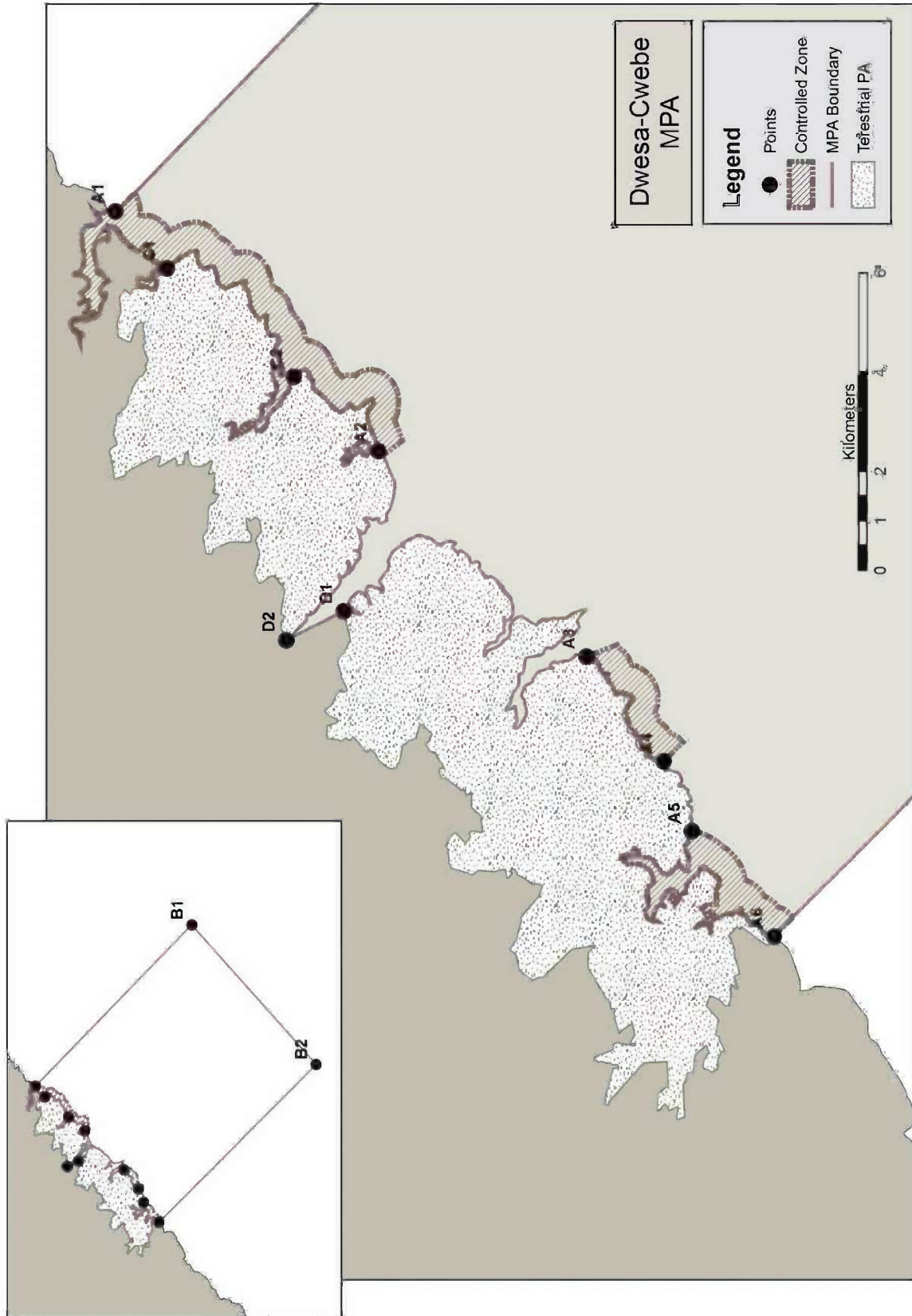
The declaration of the Dwesa-Cwebe marine protected area as contained in stipulation 2(7) of the declaration notice named Declaration of Areas as Marine Protected Areas in *Government Gazette* 219487, Notice No. 1429 of 29 December 2000 is hereby withdrawn and repealed.

13. Short title and commencement

These regulations are called the Dwesa-Cwebe Marine Protected Area Regulations and commence upon date of its publication in the *Gazette*.

Annexure 1

Code	Point X	Point Y
B2	28.978085	-32.467491
A6	28.825813	-32.315574
A5	28.844888	-32.300685
A3	28.878202	-32.280496
A4	28.857563	-32.295541
A2	28.913837	-32.243745
A1	28.957258	-32.196071
B1	29.112835	-32.347179
D1	28.890255	-32.237468
D2	28.861283	-32.228217
C1	28.947000	-32.205000
C2	28.927000	-32.228000



Annexure 2

Table 1

LINEFISH SPECIES							
PART A: INDIVIDUAL BAG LIMIT SPECIES							
Species	Common name	Min (mmTL)	Max (mmTL)	Daily Bag limit	Sale species (Yes/No)	Closed season	
<i>Argyrosomus japonicus</i>	Dusky kob	600	1000	1	Yes		
<i>Diplodus capensis</i>	Blacktail	200	470	5	No	-	
<i>Pachymetopon grande</i>	Bronze bream	300	500	2	No	-	
<i>Pomatomus saltatrix</i>	Shad/Elf	300		4	Yes	1 October – 30 November	
Family: Mugilidae	Harder/mullet	-	-	50	Yes	-	
<i>Neoscorpis lithophilus</i>	Stonebream	-	-	5	Yes	-	
<i>Sarpa salpa</i>	Strepie	150	-	10	Yes	-	
<i>Pomadasys commersonni</i>	Spotted grunter	400	-	5	No	-	
<i>Coracinus multifasciatus</i>	Banded galjoen	-	-	5	No	-	
<i>Pomadasys</i>	Piggy	70.5	-	10	Yes	-	

<i>olivaceum</i>													
<i>Rhabdosargus holubi</i>	Cape sturgeon	200	-	5	No								-
<i>Dichistius capensis</i>	Galjoen	350	-	2	No								15 October – last day of February the following year
<i>Acanthopagrus berda</i>	Riverbream	250	-	5	No								-
<i>Lichia amia</i>	Garrick	700	-	2	No								-
<i>Sparodon durbanensis</i>	White musselcracker	600	-	2	Yes								-
<i>Dasyatis chrysonota</i>	Blue stingray	-	-	1	Yes								-
<i>Elops machnata</i>	Ladyfish/ kingspringer	-	-	5	No								-
<i>Polysteganus praeorbitalis</i>	Scotsman	400	-	1	No								-
<i>Diplodus cervinus</i>	Zebra	300	-	5	No								-
<i>Rhabdosargus sarba</i>	Natal sturgeon	250	-	5	No								-
PART B: CUMULATIVE BAG LIMIT OF 10													
<i>Rhinobatos annulatus</i>	Lesser sandshark	-	1000	1	Yes								-
<i>Plotosus nkunga</i>	Eeltail barbel	-	-		Yes								-
<i>Galeichthys feliceps</i>	White barbel	-	-		Yes								-

<i>Chirodactylus brachydactylus</i>	Butterfish	-	-	-	Yes	-
<i>Plectorhinchus flavomaculatus</i>	Lemon fish	-	-	-	Yes	-
<i>Dinoperca petersii</i>	Cavebass	-	-	-	Yes	-
<i>Platycephalus indicus</i>	Bartailed flathead	-	-	-	Yes	-

Table 2

INVERTEBRATE SPECIES		Closed Season	Daily bag limit	Collection method
East Coast Rock Lobster (<i>Panulirus Homarus</i>)	1 Nov to 28 Feb	8	Collection of lobsters in berry is prohibited irrespective of season	
Crabs (<i>hermit crabs, mud crabs, mole crabs</i>)	None	15	Only collection by hand, rod and/or line	
Limpets (Family: <i>Patellidae</i>)	None	15		
Octopus (Family: <i>Octopodinae</i>)	None	2	Only collection by hand, rod and/or line	
Periwinkle/topshell/tubanshell (<i>Littorina, Oxytele, Turbo</i>)	None	50		
Seaworms (Phylum: <i>Platyhelminthes, Nemerita, Sipunculida and Annelida</i>)	None	10 individuals or 25 ml container	Only collection by hand or suction pump	
Reed bait (<i>Pyura spp.</i>)	None	2kg without the	Only collection by hand or by an implement with a	

Mussels (<i>Aulacomya</i> spp., <i>Mytilus</i> spp., <i>Choromytilus</i> spp., <i>Perna</i> spp.)	None	shell 30	blade or flat edge not exceeding 12 mm in width Only collection by hand or by an implement with a blade or flat edge not exceeding 12 mm in width
Prawns (sand prawns, swimming prawns and mud prawns)	None	50	Only collection by hand or suction pump or hand-held scoop net or trap not measuring more than 50 cm by 50 cm
Oyster (<i>Pinctada</i> spp., <i>Stiostrea</i> spp., <i>Ostrea</i> spp., <i>Saccostrea</i> spp.)	None	25	Only collection by hand or by an implement with a blade or flat edge not exceeding 40 mm and not less than 1m in length
Other invertebrates (Alikreukel, chitons and armidillos)	None	6	Collection only by hand

NOTICE – CHANGE OF TELEPHONE NUMBERS: GOVERNMENT PRINTING WORKS

As the mandated government security printer, providing world class security products and services, Government Printing Works has adopted some of the highly innovative technologies to best serve its customers and stakeholders. In line with this task, Government Printing Works has implemented a new telephony system to ensure most effective communication and accessibility. As a result of this development, our telephone numbers will change with effect from 3 February 2014, starting with the Pretoria offices.

The new numbers are as follows:

- Switchboard : 012 748 6001/6002
- Advertising : 012 748 6205/6206/6207/6208/6209/6210/6211/6212
- Publications Enquiries : 012 748 6052/6053/6058 GeneralEnquiries@gpw.gov.za
- Maps : 012 748 6061/6065 BookShop@gpw.gov.za
- Debtors : 012 748 6060/6056/6064 PublicationsDebtors@gpw.gov.za
- Subscription : 012 748 6054/6055/6057 Subscriptions@gpw.gov.za
- SCM : 012 748 6380/6373/6218
- Debtors : 012 748 6236/6242
- Creditors : 012 748 6246/6274

Please consult our website at www.gpwonline.co.za for more contact details.

The numbers for our provincial offices in Polokwane, East London and Mmabatho will not change at this stage.

Printed by and obtainable from the Government Printer, Bosman Street, Private Bag X85, Pretoria, 0001

Publications: Tel: (012) 748 6052, 748 6053, 748 6058
 Advertisements: Tel: (012) 748 6205, 748 6208, 748 6209, 748 6210, 748 6211
 Subscriptions: Tel: (012) 748 6054, 748 6055, 748 6057

Gedruk deur en verkrygbaar by die Staatsdrukker, Bosmanstraat, Privaatsak X85, Pretoria, 0001
 Publikasies: Tel: (012) 748 6052, 748 6053, 748 6058
 Advertensies: Tel: (012) 748 6205, 748 6208, 748 6209, 748 6210, 748 6211
 Subskripsies: Tel: (012) 748 6054, 748 6055, 748 6057